

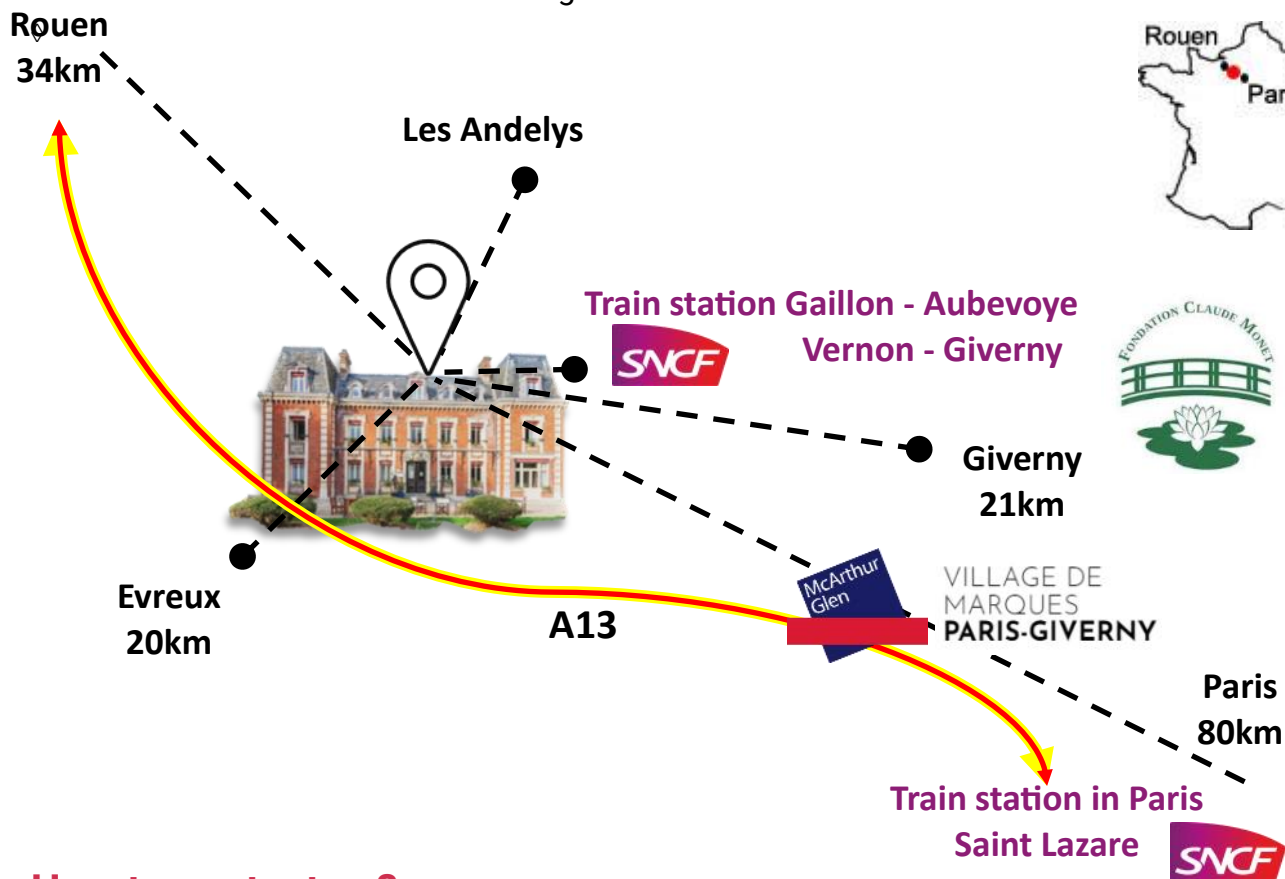


## Location, location, location!

ONLY 1 hour drive / train from Paris, 20minutes from Monet's garden in Giverny, Château Corneille, built in 18th century, opens its door and offers a greenery, peaceful environment for you.

**Address: 17, rue de l'église, Vieux-Villez 27600**

- ◇ If you take the train (SNCF), the train station Gaillon -Aubevoye is closest only 10mns drive from hotel. You can also choose public transport, **bus line E1** from train station Gaillon-Aubevoye and **bus line 202** from train station Vernon - Giverny will bring you directly to the bus stop « Vieux-Villez », only 1 minute walking distance from the hotel.
- ◇ If you take the highway A13 from Paris to Normandy:
  - Exit n°17 Gaillon
  - GPS : lat. 49.171842 - long. 1.287353



## How to contact us?

In order to benefit the best price for your stay, please take the booking **directly** from us

- ⇒ Telephone: + 33 2.32.77.44.77
- ⇒ email: [chateau-corneille@orange.fr](mailto:chateau-corneille@orange.fr)
- ⇒ [www.chateau-corneille.fr](http://www.chateau-corneille.fr)

You can also book through our partners, such as Logishotels, Booking.com, Expedia, HRS, Google, Trip. com, etc.

HÔTEL  
ÉLÉGANCE

RESTAURANT  
SAVOUREUX

17, Rue de l'Église - 27600 Vieux-Villez  
Courriel: [chateau-corneille@orange.fr](mailto:chateau-corneille@orange.fr)  
Site: [www.chateau-corneille.fr](http://www.chateau-corneille.fr)  
Téléphone: +33 2 32 77 44 77





## RATES 2026-2027

### Room

Standard	70.00€ - 128.00€ *
Classique	80.00€ - 138.00€ *
Confort	90.00€ - 168.00€ *
Suite	100.00€ - 188.00€ *
<i>Additional bed</i>	20.00€
Baby cot under 2 years	free

\* Price based on 1-2persons per night

### Breakfast

Breakfast buffet	14.00€
breakfast room service	16.00€
Breakfast children under 12 years	7.80€

### Forfait (Package)

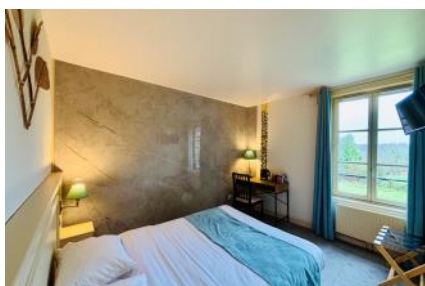
Business Overnight Stay for one person	129.00€ - 139.00€
Half Board	50.50€

#### Note:

1. Rate unit is per person per night.
2. Since 1st january 2024, taxe de séjour is 0.85€ per night et per person (> 18 years old).
3. In case of interruption of stay before term, please inform the reception 48 in advance.  
Otherwise, we may charge you full stay.

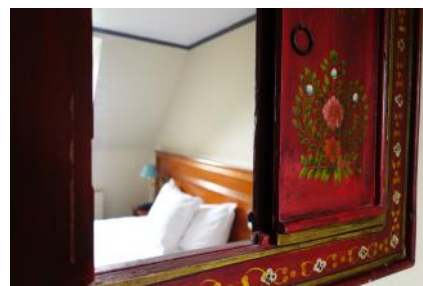
## Standard Room

- Double bed in 140cm
- WC, bath tub or shower, flatscreen TV,
- Courtesy tray/kettle with complimentary tea and coffee, bottle of water



## Classic Room

- Double Bed in 160/180cm, possible set up twin beds
- WC, bath tub or shower, flatscreen TV,
- Courtesy tray/kettle with complimentary tea and coffee, bottle of water



## Comfort Room

- Double in 160/180cm, possible set up twin beds
- A lounge area with a comfortable sofa which can turn into a sofa bed for a third person
- WC, bath tub or shower, Smart TV
- Courtesy tray/kettle with complimentary tea and coffee, bottle of water



A wheelchair-accessible ground-floor room subject to availability



## Suite

- Double bed in 160/180cm
- Separated Shower room and WC
- A comfortable lounge equipped with Smart TV
- Courtesy tray/kettle with complimentary tea and coffee, bottle of water
- Possible welcome a family of 4 persons



## Breakfast

A tasty buffet breakfast is served in our breakfast room at ground floor, from 7h15 to 9h30 (Monday to Friday), and 8h30 to 10h30 (Weekend and national holidays).

Our continental style breakfast buffet includes the typical normandie products, such as Normandy AOP cheese, hand-made jam, hand made fruit juice, fresh bread etc.

Let yourself be tempted by the aroma of freshly baked croissants and make yourself comfortable so you can enjoy this moment to the fullest.



### Story of our backyard honey



Our local supplier and partner, « Mes abeilles » produce honey in our backyard. Scientist explains this is the best nature way for the wellbeing of bees.

### The best apple product in Normandie!

Our other supplier and partner, « La Ferme des noës » runs their agriculture family business just 10mns from Château Corneille. Their Cidre won the Competition of 'Général Agricole de Paris' since 2002! Nothing can compare a glass of hand-made apple juice in the morning and enjoy fresh french baguette with Noës's famous apple jam.



## Restaurant « La Closerie »

Our restaurant « **La Closerie** » located in former stables in the park of the hotel. Set in the former stables, the restaurant exudes an authentic, cozy atmosphere around a grand fireplace. On sunny days, our terrace offers a serene setting to enjoy leisurely lunches.

Our chef and his team are delighted to welcome you and provide the art of cuisine inspired by the tradition flavors of Normandy. Our home-made dishes choose only the best hand picked Normandy products.

### RESTAURANT HOURS

Lunch: 12h00—15h00 (Last order 13h30)

Dinner: 19h00—23h00 (Last order 20h45)

Closed on Monday, Saturday lunch, and Sunday dinner.

Opening is available for groups of more than 15 people, with tailored packages for private events and associations. Contact: +33232774477.



## FAMILY STAY FACILITIES

**Rooms for family :** 8 rooms equipped double bed plus a sofa bed can welcome a whole family (subject to additional charge).

**Baby cot (-2yrs):** on demande and free

**Bottle warmer:** on demande and free

**Micro-onde:** available from 7.00am to 8.00pm and free

**Changing mat:** on demande and free

**High chair:** on demande and free

**Kids menu:** from 16,80€

**Breakfast price for –12yrs:** from 7.80 euros

**Board games:** on demande and free

**Big garden:** Feel free to entertain you in greens

**Pet Shop:** The hens, the rabbits, and even the goat will not only make your kids happy, but also recall your childhood memories.

**Babysitting:** We can help you to book babysitting service for your kids from 0 to 12 yrs old. Please inform us at least one day before your arrival and consult the tariff.



## SPECIAL OFFER FOR BUSINESS

During your business travel, we provide a special package « Soirée étape » for your business travel from Monday to Thursday (business travels). It includes room, a delicious diner « menu du chef » and a tasty breakfast for one person.

With a high speed internet connection, we assure a comfortable and efficient environment for your work or teleworking. A smart TV in our business rooms will give you a relaxing moment between your hard working.

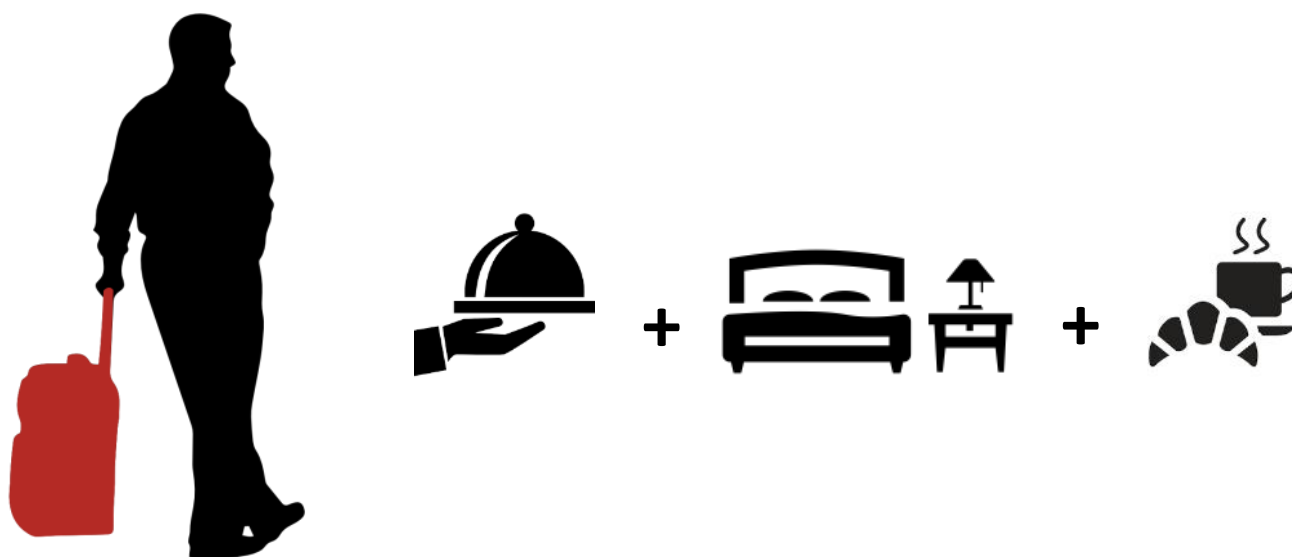
Enjoy it!

### Tariff Soirée étape 2026

Type of tarif	Per night
Standard	129€
Premium	139€

Note: Tarif for one person, exclude drinks and taxe de séjour.

With a surcharge, you can upgrade to our menu Chimène (+10€) or menu CID (+20€)



## MEETING ROOM RENTAL

Our meeting room « Monet » is perfect for working in peace. Lit by daylight from its windows, it offers a magnificent view of the park.

Fully equipped with broadband connection, overhead projector with a large projection screen, a flip chart, and a separate mingle and beverage area at the entrance, our meeting room has all the amenities you need for a successful professional event.

Looking to add something to your meeting with snacks or food platters? We have you covered ! Please contact hotel management for information about your events and to receive a personalized cost estimate .





## SUSTAINABLE STAYS

Hotel Château Corneille is committed into an eco-aware approach as we are all concerned by environmental issues. We are dedicated to balancing our commitment to this policy without compromising on the comfort, standards and enjoyment of our guests. We would like to enlist your help in achieving our aims.

### § Let's protect our water resources

We will change your towels when needed: please leave the ones to be changed in the bathtub or on the ground.

We limit the linen change (every 4 days) in order to reduce the impact of harmful products for the environment.

Make sure taps are switched off when brushing teeth in order not to run water unnecessarily.

Be careful about what you throw into the toilets, wastebaskets are available in all bathrooms. Diapers or sanitary towels for example distort the smooth running of water-treatment plants.

Please inform us if there is any water leak or disfunction.

### § Energy is our future, let's save it !

As part of our environmental friendly approach, we engaged to become more ecologic.

Did you know that from the dishes you choose in our restaurant « La Closerie », 100% of the fresh ingredients are from Normandy? Our choice of decreasing our carbon footprint with shorten transport distances allows us, on the one hand to provide you the delicious food using eco responsible recipe, on the other hand to well support the local business.

### § Let's reduce our waste quickly: it's overflowing !

Whenever possible and in compliance with the rules of hygiene, we limit as much as possible the waste, disposable products and overpacks. For example, we have removed all disposable plastic glass in the bathroom: instead, we offer glass of excellent quality in recycable plastique. Moreover, there is a small animal farm at the corner of our garden. Come and visit the hens, the rabbits, the goat etc. You can feed them with the day-old bread or the dwindled vegetables. Your kids would love it! !

We sort the waste. You can help us by depositing: • your empty packaging, bottles and newspapers in the basket under the desk, • your non-recyclable waste in the trash of the bathroom, • your used batteries at the reception desk. Thank you!

# *l'Eure* ) #JE SUIS AILLEURS EN NORMANDIE

Eure is a history filled region. During your stay, we assure that you will discover endless places to visit in this region. You definitely heard about the world heritage of impressionism of Claude Monet. There are other magnificent heritage historical and cultural, such as some charming villages, some terraces to discover in urgent, some outdoor activities or some historical monuments of Middle Age. Plenty of pleasures of discovery reaches out to you.

One thing is clear: in Eure, the adventure attracts you in all different ways. For more information, please visit the following official sites:

<https://www.tourisme-seine-eure.com> or <https://www.nouvelle-normandie-tourisme.com>



Maison de Claude Monet à Giverny

## EXPERIENCES EN SEINE EURE

### Cultural and historical experiences:

-Château de Gaillon - Château Gaillard - Abbaye de Bonport -Parc du château d'Acquigny -Barrage et écluse d'Amfreville sur Les Monts -Château de Canteloup -Circuit de découverte d'Acquigny, Poses, Val de Reuil, Pont de l'Arche, Louviers -Eglise Notre - Dame de Louviers, Eglise Notre-Dame des Arts -Logis de la Garenne -Manoir d'Hellenvilliers, Manoir de Senneville -Médiathèque Boris Vian, Médiathèque le Corbusier -Mini réseau -Musée de la Batellerie -Musée de la ville de Louviers

### Open air expériences :

-Aventur'Eure Canoë-Le randonn'Eure -Club d'Aviation légère de Haute Normandie-Eur'en ciel -Ferme équestre des sablons, Les écuries de la voie blanche, les p'tits sabots, les écuries du bord de Louviers, Le chemin du halage -Gît âne Evasion -Golf du Vaudreuil, Golf de Léry Poses -Parc de Loisirs de Léry Poses, Plan d'eau d'Acquigny - Site d'escalade d'Amfreville sous les Monts -Tmcl Paintball

### Water sports experiences:

-AONES Canoë-kayak -Aventur'Eure Canoë - Le Randonn'Eure -Canoë Kayak Val de Reuil Pagaie Passion -Centre aquatique Caséo -Club de ski nautique et wakeboard -Haltes fluviales et cales de mise à l'eau -Liberté Seine -Parc de Loisirs Léry-Poses en Normandie -Piscine de Val de Reuil -Rives de Seine Croisières -Club de ski nautique et wakeboard -Haltes fluviales et cales de mise à l'eau -Liberté Seine -Piscine de Val de Reuil -Rives de Seine Croisières



Château de Gaillon



Château Gaillard



château d'Acquigny



Aventure en plein l'air



## EXPERIENCES EN SEINE EURE

### Fun day out experiences:

- Aires de Jeux -Ecole française de Cerf-Volant Kit'Anim -Gît'Ane Evasion -Le Kolysé -Le Seinoscope -Ludothèque - La semaine des 4 jeudis
- Médiathèque Boris Vian -Médiathèque Le Corbusier -Plan d'eau d'Acquigny-Time block
- MLC Paintball -Toukyland
- Urban Paintball Indoor

### Countryside experiences :

- Acquigny, Parc du château d'Acquigny -Atelier Galerie du Bord de Seine -Biotropica – Chasse –Jardin Aristide Briand
- Jardin de Bigards-Le Seinoscope -Manoir de Senneville -Panorama de Vironvay - Panorama du Plessis
- Plan d'eau d'Acquigny -Réserve ornithologique -Zone humide des Pâtures

### Local arts and crafts experiences:

- Galeries d'artistes : Atelier du Mesnil, Atelier Galerie du Bord de Seine, Atelier Gérald Kerguillec, L'Art et la Manière, L'attrape couleurs, Rose Barbe Pastelliste
- Ateliers: Atelier de Porcelaines, Atelier du Mesnil, Atelier-poterie de la Mare, Faïencerie Lambert, L'Art et la Manière

### Hiking experiences :

<http://www.tourisme-seine-eure.com/fr/que-faire/balades-et-randonnees/balades-et-randonnees/autour-de-connelles>

### Fishing experiences :

- Carte de pêche à Louviers, La carpe posienne, Parcours passion float tube avec l'AAPPMA l'Union des Pêcheurs à la ligne de Louviers et l'Agglomération Seine-Eure, Spots de pêche Seine-Eure

### Local wildlife experiences:

- Parc animalier Biotropica
- Animalerie Château Corneille

### En savoir plus, allez sur site internet officiel:

<https://www.tourisme-seine-eure.com>

HÔTEL  
ÉLÉGANCE

RESTAURANT  
SAVOUREUX

17, Rue de l'Église - 27600 Vieux-Villez  
Courriel: [chateau-corneille@orange.fr](mailto:chateau-corneille@orange.fr)  
Site: [www.chateau-corneille.fr](http://www.chateau-corneille.fr)  
Téléphone: +33 2 32 77 44 77





## EXPERIENCES EN NOUVELLE NORMANDIE VERNON, LES ANDELYS ET PACY SUR EURE

### Museum experiences:

- Musée de Vernon (A.G. Poulain) -Musée de la Mécanique Naturelle -Musée des Impressionismes Giverny
- Musée du cinéma et de la photographie Jean Delannoy -Musée Nicolas Poussin

### Heritage experiences

- Château Gaillard La réalité virtuelle -Château de Bizy Vernon -Château du Buisson de May Saint-Aquilin-de-Pacy -Collégiale Notre-Dame Vernon
- Église Saint-Sauveur Les Andelys -Collégiale Notre-Dame Les Andelys -Eglise Saint-Aubin Pacy-sur-Eure -Eglise Sainte-Radegonde Giverny -Parc du château de Saint-Just -Jardins de Claude Monet Giverny
- Jardin du musée des impressionismes Giverny -Le Chemin de Fer de la Vallée de l'Eure -Le Bateau-Atelier « Sur les traces de Claude Monet » -Fondation Claude Monet Givry -Ma Roulotte, ancienne maison de Pierre Bonnard Vernon
- La Commanderie de Chanu Villiers-en-Désœuvre -Domaine des Prévanches Boisset-les-Prevanches

### Hiking and biking experiences:

- Sentier de découverte « Nature et Paysages à Vernonnet »
- Sentier de l'Astragale Giverny
- Sentier du Léopard Vert Giverny
- Sentier de découverte des Bois de Breuilpont -Les jeunes pousses La Chapelle-Réanville -Dans le sillon des agriculteurs Villiersen-Désœuvre
- Sentier de découverte Ménilles et Houlbec-Cocherel
- Sentier de découverte Saint-Just et Saint-Pierre d'Autils
- Sentier de découverte sensorielle des arbres de Bizy Vernon -Les Vaux du Milon Gasny
- Voie Verte de la Vallée de l'Eure Saint-Georges-Motel Bueil -Voie Verte de la Vallée de l'Epte Gisors Gasny



## EXPERIENCES EN NOUVELLE NORMANDIE VERNON, LES ANDELYS ET PACY SUR EURE

### Sports and Recreational activities:

-Ecole d'équitation et d'attelage Claude Guilbaud Villiers-en-Désœuvre -Attelage des trois vallées Vernon -Centre équestre du clos Saint-Aquilin-de-Pacy -Centre équestre et poney club de la forêt de Merrey Merrey -Haras des Ô Saint-Pierre-d'Autils

-Centre équestre des 3 chênes Vernon -Les écuries de la petite folie Saint-Marcel -Les chiens de traîneaux du Bois Richard

-Le Petit Train Givernon -L'Eure de l'ULM -Croisière Liberté Seine -Halte fluviale – Vernon -Aventur'Eure -Canoë-kayak – Vernon -Ski nautique sur la Seine Vernon -Espace nautique de la Grande Garenne Saint-Marcel -Espace nautique Robert Taron - Pacy-sur-Eure -Piscine des Andelys

### Events and live shows activities:

-Espace Philippe-Auguste Vernon -Centre Culturel Guy Gambu Saint-Marcel

### Going out in the area:

-Cinéma le Palace Les Andelys -Billard – La noire blanche Vernon -O'bowling Saint-Marcel -Laser Game et billard Saint-Marcel -Cinéma Théâtre Vernon -Laser Game Evolution Vernon -Maison de la Figurine Vernon

More info available on

<https://www.nouvelle-normandie-tourisme.com/en>